

A

B

C

D

E

F

☆☆☆ 270 Series ☆☆☆

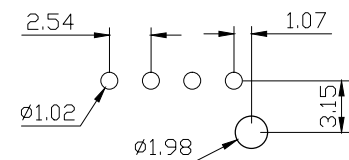
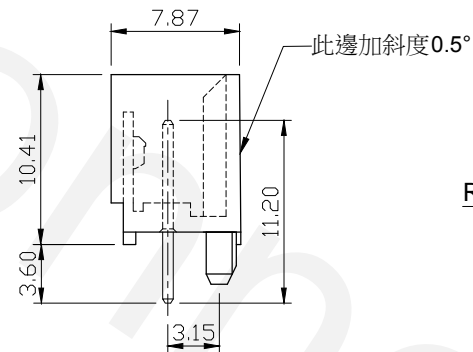
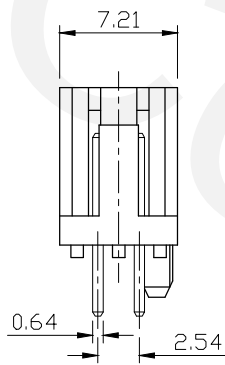
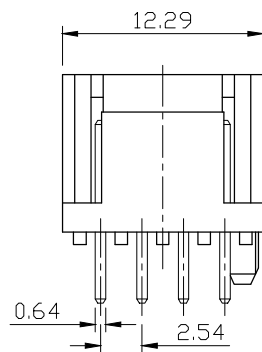
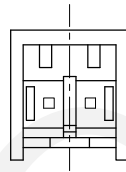
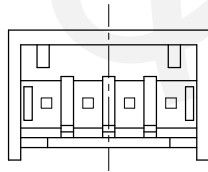
P/N: W270V**T00

Material: Glass-Filled Polyamide, UL 94V-0, Black

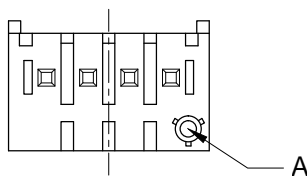
Conductor: Chopper Alloy, Tin-Plated

Available: 2,4P

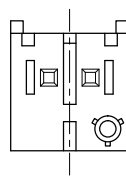
Mate with H270



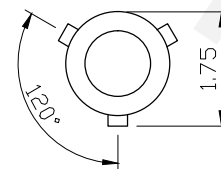
RECOMMENDED P.C. BOARD HOLE DIMM.



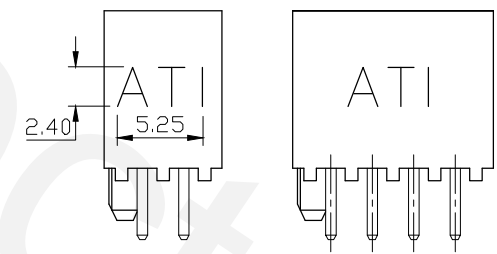
4P



2P



Section A



RoHS Compliant

TEL: 886-2-86871898 FAX: 886-2-86872959
 Mail: tceldh@gmail.com Web: http://www.cnj.tw/

TITLE

.100"(2.54mm) Wire to Board Vertical Wafer

DIMENSION TOLERANCE

.x ±0.30 x° ±2°
 .xx ±0.20
 .xxx ±0.10

P/N	W270V**T00	CHECKED	David	UNIT	mm	DATE	2010/09/01
DRAWN	Michael	APPROVED	Lily	SCALE	1:1	REV	A

☆☆☆ 270 Series ☆☆☆

P/N: W270V**TTS

Material: High Temp Thermoplastic, UL 94V-0, Natural

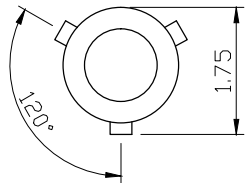
Conductor: Copper Alloy, Tin-Plated

Available: 2,4P

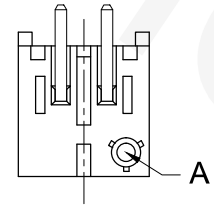
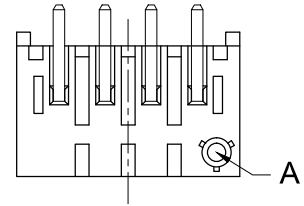
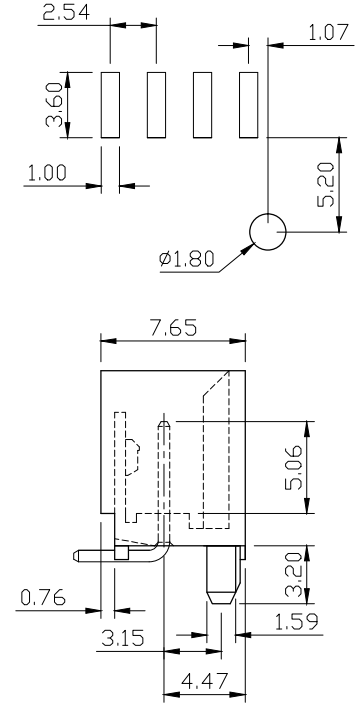
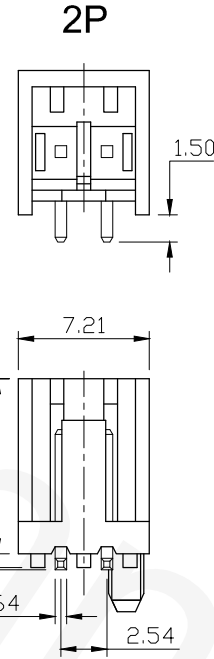
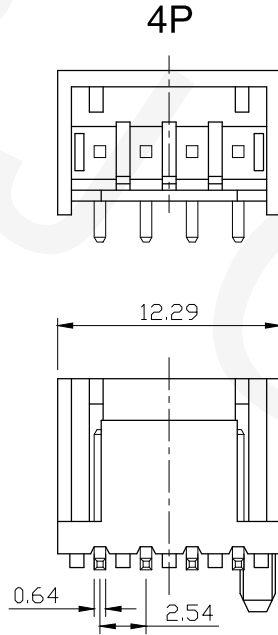
Mate with H270

REVISIONS			
REV	DESCRIPTION	DATE	DRAWN
A			

RECOMMENDED P.C.BOARD HOLE DIMM.



Section A



RoHS Compliant



TEL: 886-2-86871898 FAX: 886-2-86872959
 Mail: tceldh@gmail.com Web: http://www.cnj.tw/

TITLE
 .100"(2.54mm) Wire to Board Vertical Wafer with Column

DIMENSION TOLERANCE	
.x	±0.30 x° ±2°
.xx	±0.20
.xxx	±0.10

P/N	W270V**TTS	CHECKED	David	UNIT	mm	DATE	2010/11/30
DRAWN	Michael	APPROVED	Lily	SCALE	1:1	REV	A